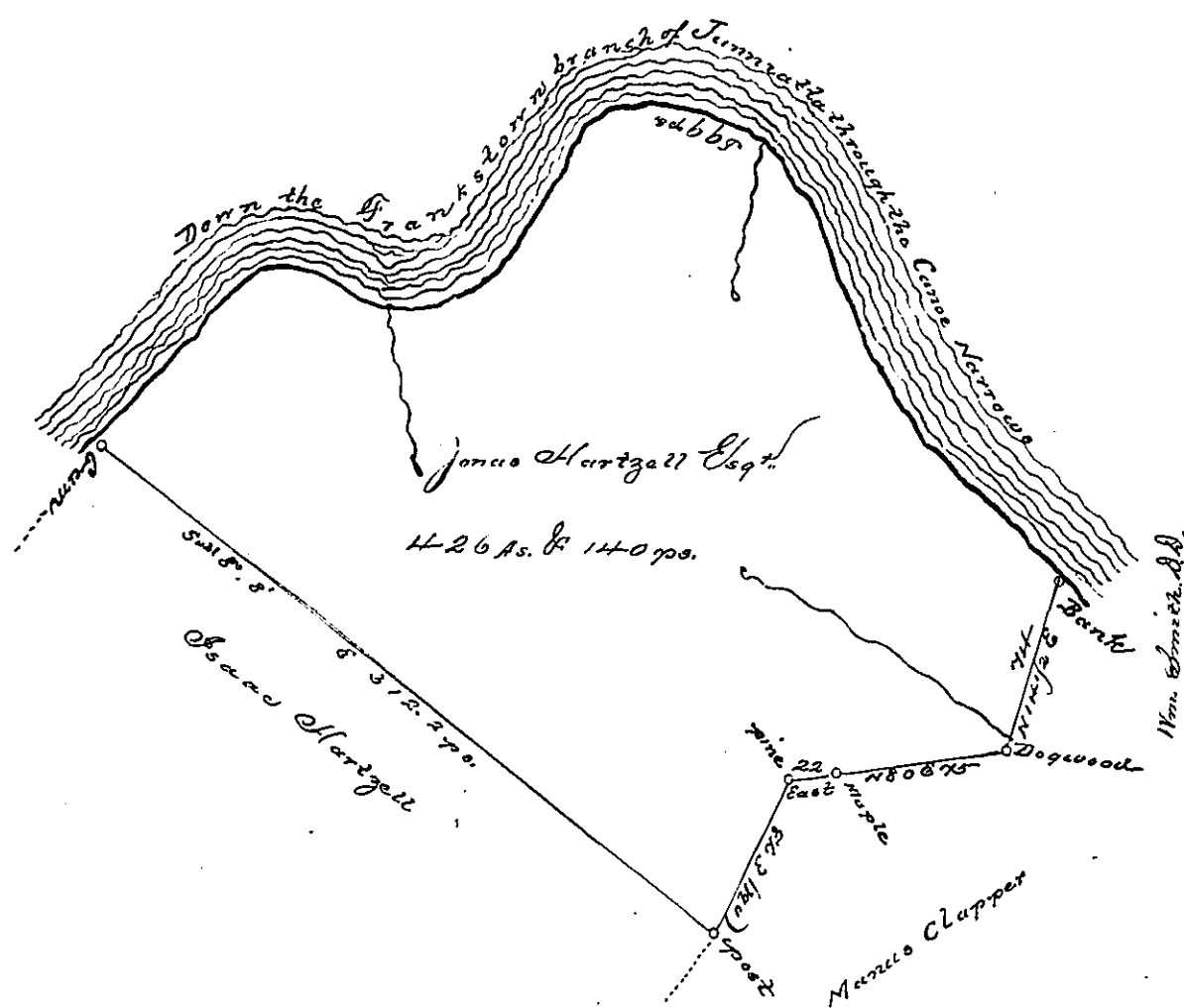


The courses along the River from the
Bank below to the Gum tree above &c



- N. 44. W. 70.
- N. 46. W. 40.
- N. 36. W. 22.
- N. 24. W. 56.
- N. 34. W. 26.
- N. 58. W. 10.
- S. 80. W. 24.
- N. 74. W. 24.
- S. 77. W. 12.
- S. 47. W. 10.
- S. 43. W. 16.
- S. 34. W. 23.
- S. 24. W. 26.
- S. 56. W. 30.
- S. 60. W. 18.
- S. 77. W. 16.
- West 10.
- N. 64. W. 40.
- S. 77. W. 18.
- S. 52. W. 14.
- S. 45. W. 20.
- S. 40. W. 26.
- S. 34. W. 28.
- S. 50. W. 14 to
the Gum tree

Situate in Woodberry & Frankstown Townships Huntingdon County, Containing 426
acres & 140 perches & the usual allowance for Roads, Highways &c. Surveyed the
3^d day of July 1794 (on warrant dated the 13th day of February 1794).

John Saxon D.S.

Amiel Prochhead Esquire
Sg.

IN TESTIMONY that the above is a copy of the original remaining on file in the
Department of Internal Affairs of Pennsylvania, made con-
formably to an Act of Assembly approved the 16th day of
February, 1833. I have hereunto set my Hand and caused
the Seal of said Department to be affixed at Harrisburg, this

third day of December, 1895,

James D. Latta
Secretary of Internal Affairs.